

### IN THIS ISSUE

#### Training News

*Industrial and shutter door CE Marking  
Training available*

#### Training News

*EGD gains official training centre status for GTE force testers*

#### Product Update

*NEW ASO GF 35.55 Plug'n'Sense Safety Edge System*

#### Safety Update

*DHF releases CE marking guide for Industrial doors*

#### Product Highlight

*ASO Safety Edges for shutter and industrial doors*

### USEFUL LINKS

*Please see a list of useful web links below with relation to all articles in this newsletter!*

[www.asosafety.co.uk](http://www.asosafety.co.uk)

[www.egduk.com](http://www.egduk.com)

[www.easygates.co.uk](http://www.easygates.co.uk)

[www.dhfonline.org.uk](http://www.dhfonline.org.uk)

[dhfpoweredgategroup.co.uk](http://dhfpoweredgategroup.co.uk)

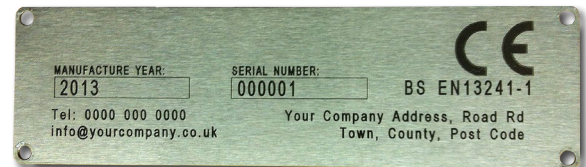
[www.prastel.com](http://www.prastel.com)

[manuals.easygates.co.uk](http://manuals.easygates.co.uk)

### TRAINING NEWS

## Industrial & Shutter Door CE Marking - Training Now Available

EGD is now offering its expertise and products to manufacturers of non-fire rated Industrial doors & shutters to aid compliance with the new CPR (Construction Products Regulations) due to be enforced in **July 2013**. As part of our training and advice regarding this new regulation, we will help de-mystify the requirements of compliance, including how to self-test and certify your door using our cost effective force measurement equipment.



In addition to test equipment we can provide customised CE marking plates, laser engraved with your custom company details/logo and conformance markings along with advice on creation of your own **DOP (Declaration of Performance)** certificates and technical files. Call us today to arrange a visit from one of our experts.

*Call us today on 0845 054 50 70 or 01384 569 942 to arrange a visit from one of our experts.*

### TRAINING NEWS

## EGD gains official training Centre status for GTE range of force testers

After demonstrating its capabilities with progressive sales growth in force testing equipment, EGD has recently gained official status as a "GTE Approved Training Centre" for their KMG product range. GTE **Industrietechnik**, based in Germany, produce highly accurate precision engineered force testing equipment for use in both the door and gate industry. The KMG range includes a highly affordable solution allowing for manual recording of test results (KMG-LITE, NO memory) which can then be uploaded to an online report tool which creates detailed documentation print outs. In addition, we are also able to supply a product (KMG-2000) incorporating a 500 measurement on-board memory, allowing for testing of up to 18 individual gates before docking with a computer and software to produce reports. Whichever solution is decided upon, EGD offers an unrivalled **FREE training service** upon purchase. This can be carried out at EGD's customised training facility (based in the West Midlands); at a customer's offices or, if suitable, on-site with your gate/door - demonstrating in real-time the product benefits and how to safely test.

*For more information of the KMG range of testing equipment, please visit [www.egduk.com](http://www.egduk.com) or call us today on 0845 0545070.*



*Quick Force Test*  
Official Training Centre



# ASO GF 35.55 Plug'n'Sense Safety Edge System

## New Safety Edge Profile Raises Performance Levels

Following the introduction of the highly successful Plug'N'Sense self-assembly system for the GE F series safety edge in early 2012, ASO Safety Solutions & it's UK partner EGD are proud to present the **NEW GF series safety edge range**.

As of May 1st, the GF 35.55 (55mm) profile will be the first of its type in the range to be made readily available for installers to self-assemble safety edges quickly and efficiently using the already proven Plug'N'Sense system. With the new GF series edge we are bringing a new **Elastomer** material to the market for the first time which allows for a faster reacting, better performing safety edge.

Our new material will provide all the benefits of current safety edge material types, whilst adding greater flexibility and reaction time coupled with a greater over travel distance. Due to this NEW material and design we can now provide all of the performance of a conventional 65-75mm safety edge in a much smaller overall package of 55mm or under which is critical when selecting the correct safety edge to enable compliance with Industry standard force testing. **ASO & EGD** will progressively roll out additional profile depths in the **GF series** over the coming months, demonstrating its continued development and commitment to safety excellence.

The **NEW Elastomer material** has now also been implemented in to ASO's GE F series of safety edge (GE F 45/65), further enhancing the already market leading performance of this product!

For **FREE training** and self-assembly samples of the NEW GF (or GE F) profile ranges, please contact Stuart Roddy on 0777 2697230 or [asosafety@egduk.com](mailto:asosafety@egduk.com).



## ASO Safety Edge for doors

Being established as a leading supplier of safety edges, ASO is continually developing products to enable easy installation, maintenance and troubleshooting in all industries. Our shutter and Industrial door profiles are gaining popularity for their robust and simple assembly system. This will allow door manufacturers to quickly and efficiently build and fit safety in a matter of minutes.

*Call us today to discuss our specific shutter and industrial door safety edge profiles.*



## SAFETY UPDATE

### DHF releases CE marking guide for Industrial doors

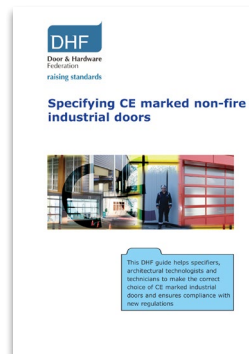
**As of July 2013**, it will become a criminal offence to supply any non-fire rated industrial door or shutter which does not comply fully to the BS EN 13241-1 product standard under the CPR (Construction Products Regulations). The DHF (Door and Hardware Federation) guidance document ([download link in section below](#)) sets the scene for door manufacturers and installers and looks to address questions and issues relating to the requirements of the CPD. EGD is able to offer several beneficial services and products to door manufacturers and service companies that can assist with meeting these requirements. From our range of CE marking plates & force testing equipment through to our CPD compliant resistive safety edges, we can provide technical advice and product integration methods helping you to ensure you are in accordance.

Contact us today for further advice on Industrial door products & services 0845 0545070 or [asosafety@egduk.com](mailto:asosafety@egduk.com)

### Download the Guide

The DHF guide is downloadable in full from:

<http://www.dhfonline.org.uk/pubGet.asp?em=no&item=205&ext=pdf>



Door & Hardware Federation

raising standards

**By Post / Visit Us**  
EasyGates Distribution  
Unit 16  
James Scott Road  
Halesowen  
West Midlands  
B63 2QT

**Email**  
[info@egduk.com](mailto:info@egduk.com)  
[asosafety@egduk.com](mailto:asosafety@egduk.com)

**Telephone**  
0845 054 50 70

**Fax**  
0845 054 50 70

**Online**  
[www.egduk.com](http://www.egduk.com)

**Contact us for a copy of our guide to the new Plug'N'Sense systems!**

In addition to our **Plug'N'Sense guide**, our website is host to a variety of Safety Guides and FAQs.

Visit us at [www.egduk.com](http://www.egduk.com) to view our collection of Gate Safety Documentation

